

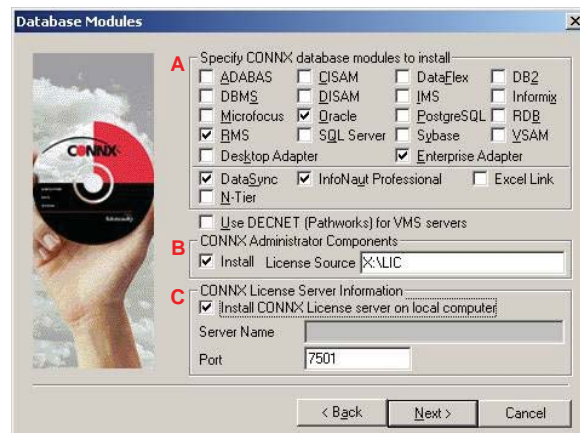
Utilizing the New License Server Technology

License Server Installation

CONNX 10.5 introduces a new licensing technology that requires the installation of a license server. If you are using a version of CONNX lower than 10.5, you will need to install the license server in addition to the CONNX client and server components. Once the server has been installed, the 'CONNX License Administrator' can be used to activate, update or verify licenses. The 'CONNX License Administrator' can be obtained by installing the administrative components during the initial install, which is shown in the 'Database Modules' screen below.

Please follow the steps below to complete the license server installation.

1. Define which machine is going to be the license server. Before you can use the new 10.5 version of CONNX, you must have a license server running and a license file activated. The license server can run on Windows or a select list of UNIX systems.
2. Install the license server. If the license server is going to operate on a Windows platform, run the main CONNX installation directly on that Windows machine. If the license server is going to operate on a UNIX platform, run the UNIX Client setup on the UNIX machine.
3.
 - A. During the installation, check the database modules you wish to install.
 - B. In the 'CONNX Administrator Components' field, check the box labeled, 'Install,' **IF** you intend to install the CONNX Administrator Components on this machine. These components include the License Administrator and CDD Manager.
 - C. In the 'CONNX License Server Information' field, check the box labeled, 'Install CONNX License server on local computer', **IF** this is the machine that will be used as the CONNX License Server.

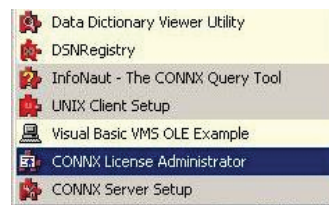


License Registration

Please follow the steps below to complete the license registration.

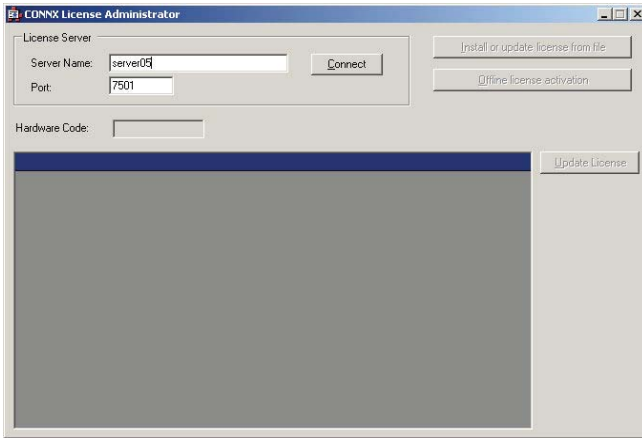
4. Provide a valid Windows domain account to run the license server on a Windows machine. The license server runs as a service.
5. Register your license with the License Administrator.

CONNX JDBC Serve...	Started	Automatic
CONNX License Ser...	Started	Automatic
CONNXSchedule	Started	Automatic

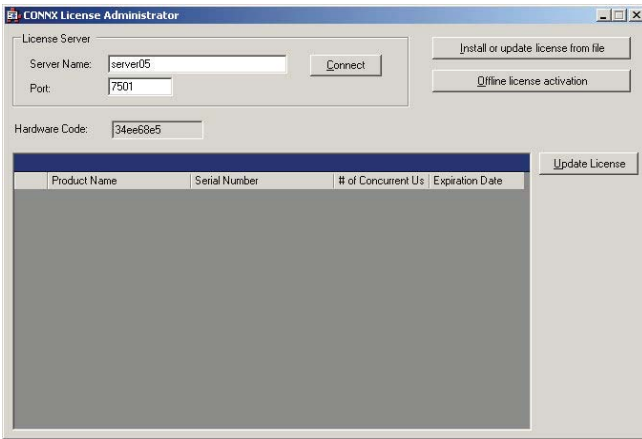


License Registration (Continued)

- On a CONNX client computer on which the CONNX Administrator component is installed, click the 'Start' button, and then point to Programs. Click CONNX 10, and then click CONNX License Administrator. The CONNX License Administrator window will appear. The server name and port should be pre-populated with the correct CONNX license server, based on selections during installation. If the server name and port are not correct, enter the proper information. Press Connect.



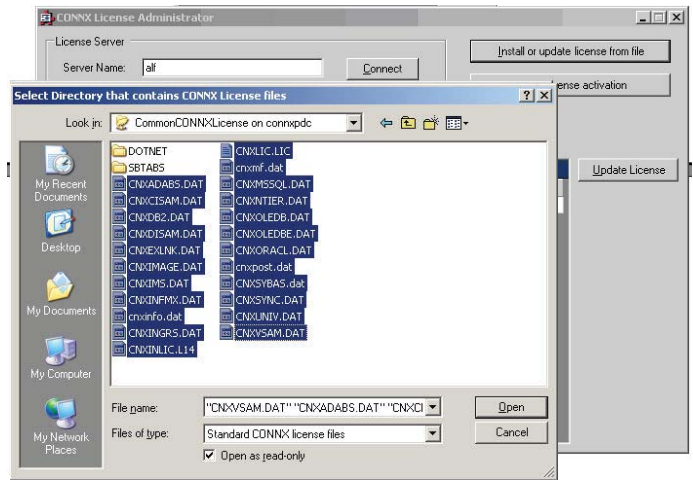
- Once connected to a license server, press the 'Install or update license from file' button.



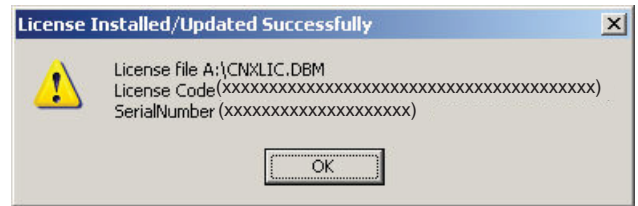
- After connecting to the license server, you have the option of registering your license on-line or through the offline method.

On-line Method

- Press the button 'Install or update license from file.' This will prompt the Window shown below. Through this Window, navigate to the UNC path where all of your existing CONNX license files are stored. Select them all by holding down the CTRL or SHIFT key. Press 'Open' once the appropriate files are selected.



- After several seconds, the 'License Installed/Updated Successfully' window will appear (multiple times if you selected multiple files), confirming valid registration and activation of each license.



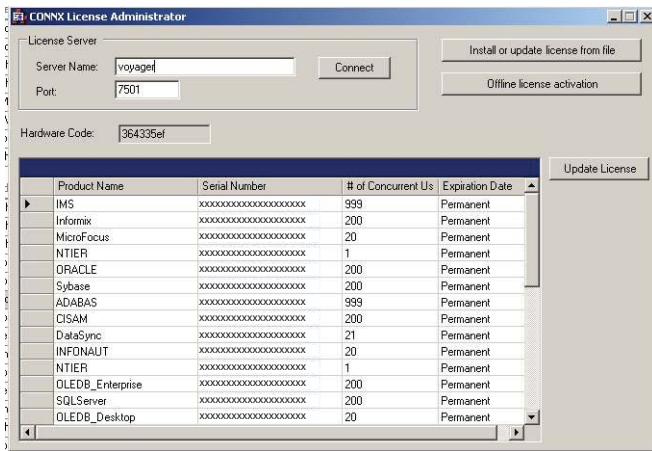
- Click the X button in the 'CONNX License Administrator' window, or conduct any additional license upgrade procedures, as required.

Offline Method

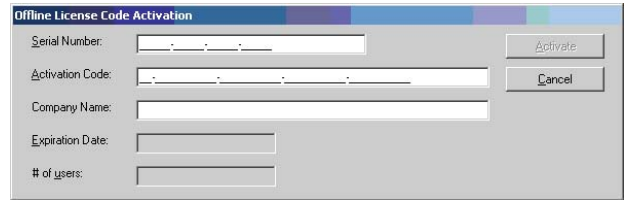
12. Choose the offline method only if the server running the license service does **not** have an Internet connection or if you have a proxy or firewall in place that prevents access to the CONNX license web service. This step is going to require the Hardware Code from the machine that is designated as the license server. To obtain this code, run the License Administrator and connect to that machine. The Hardware Code will be displayed in the field labeled 'Hardware Code.'

NOTE:

The hardware code CANNOT be used to determine the MAC address. The code is a combination of several components of the hardware, but the identity of any particular hardware component cannot be reverse engineered from the code.

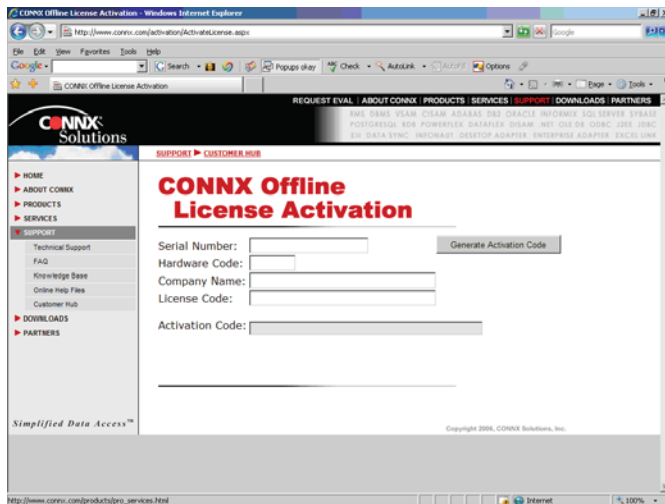


- 14. Enter the Serial Number, Hardware Code, Company Name and License Code in the fields provided.
- 15. Press the 'Generate Activation Code.' Once, the code is generated, be sure to write it down.
- 16. Run the 'CONNX License Administrator' and press the 'Offline License Activation' button. A new Window will appear requesting all the information you entered and generated in steps 9 and 10. After entering that information, press 'Activate.'



- 17. After several seconds, the License Installed/Updated Successfully window will appear, confirming valid registration and activation.

13. Locate a computer that does have Internet access, and go to <http://www.connx.com/activation.asp>



Un-installing CONNX on License Server Computer

If CONNX is un-installed on the license server computer, then the license server will no longer function, and CONNX will no longer be available for use on the network until the license server is re-installed.

An un-install of CONNX on the license server does not remove the license activation information. That information is stored in a file located in the CONNX installation directory (usually C:\CONN32) and that file is not removed upon un-install. The file is called CNXLICENSE.db.

If this file is deleted, the licenses must be re-installed and re-activated. As long as the license server is re-installed on the same computer, licenses can be re-activated as many times as necessary (assuming the hardware code of the license server does not change).

If CONNX is re-installed into a different directory, copy the CNXLICENSE.db file from the old CONNX32 directory to the new CONNX32 directory. As a result, license re-activation will not be necessary.

CONNX Solutions, Inc
2039 152nd Avenue NE
Redmond, WA 98052
425/519-6600
fax: 425/519-6601
toll-free: 1-888-88CONNX

www.connx.com

©CONNX Solutions, Inc., 2007. All rights reserved.
All product and company names used within this document may be the trademarks or registered trademarks of their respective owners or organizations in the United States and/or other countries.