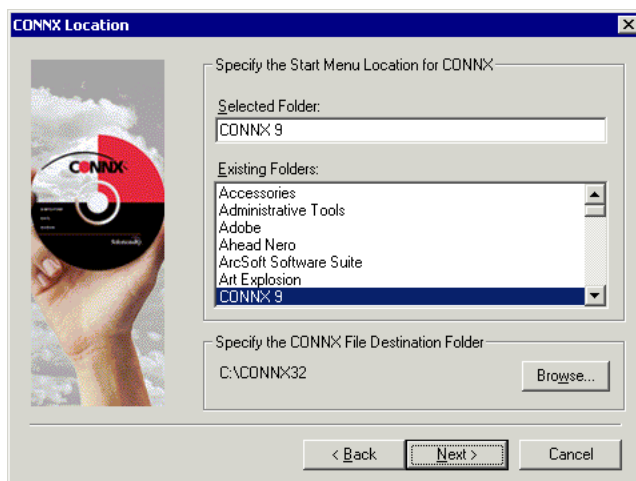
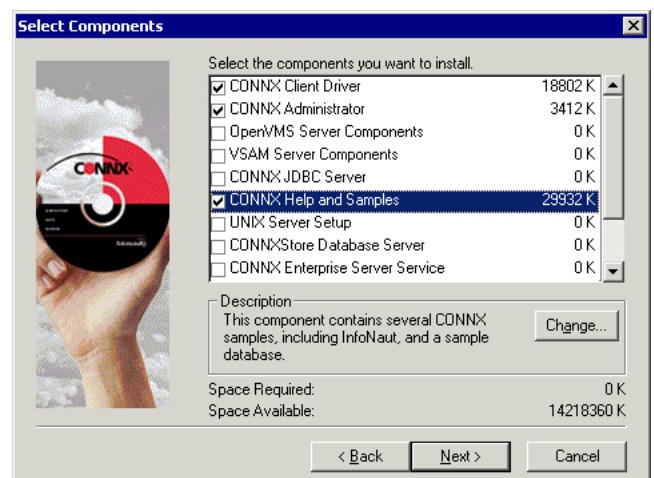


Accessing DataFlex data with CONNX is as easy as 1, 2, 3!

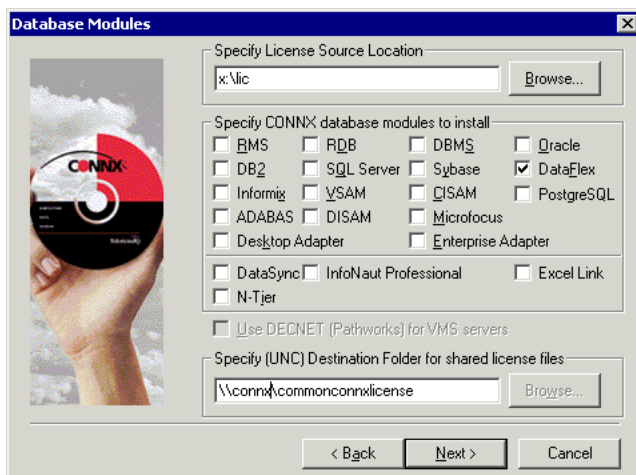
1. Start CONNX Installation by either inserting the CONNX CD-ROM into your disk drive or downloading the files sent to you via e-mail. Click the **Install CONNX** button, and then click the **Yes** button to accept the **End Users License Agreement**. In the CONNX Location window, select **CONNX 9**, and then specify the destination folder for CONNX. Click the **Next** button.



2. In the **Select Components** windows, select the **CONNX Driver**, **CONNX Administrator**, and **CONNX Help and Samples** check boxes. Click the **Next** button.



3. In the **Database Modules** window, specify your license file location, and then select the **DataFlex** check box. It is recommended that the license files be placed on a server that allows for the same number of simultaneous connections as the license count purchased. Specify the destination folder for the shared license files. Enter a UNC destination folder or click the **Browse** button under **Specify (UNC) Destination Folder for Shared License Files** to select a network path. Click **Next**. Restart your computer.

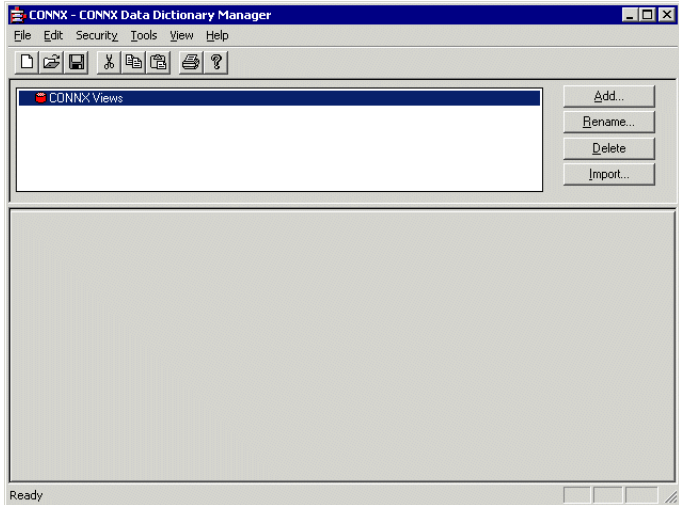


You must install the CONNX client component on each machine requiring data access. That can be easily accomplished by following the instructions in "Silent Client Installation", which can be found in the CONNX Installation Online Help on the CONNX CD-ROM or on the CONNX Web site at [www.connx.com](http://www.connx.com). It is not necessary to install the CONNX Administrator on machines requiring data access only.

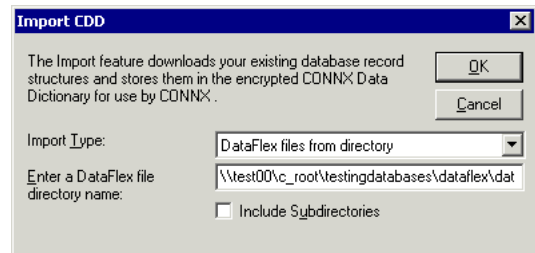
## Accessing DataFlex data with CONNX

### Page 2 of 3

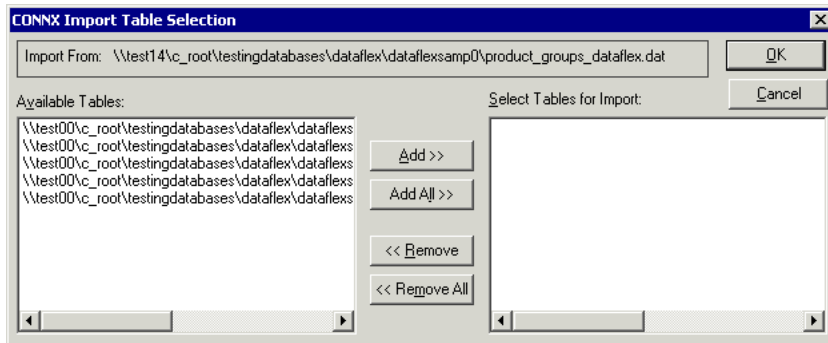
5. You can now import your DataFlex data sources and create a CONNX Data Dictionary. Click **Start**, point to **Programs**, select **CONNX 9**, and then click **CONNX Data Dictionary**. The **CONNX Data Dictionary Manager** window appears. Click the **Import** button.



6. Select **DataFlex files from directory** from the **Import Type** list box, and then enter a **DataFlex file directory name**. Click the **OK** button.

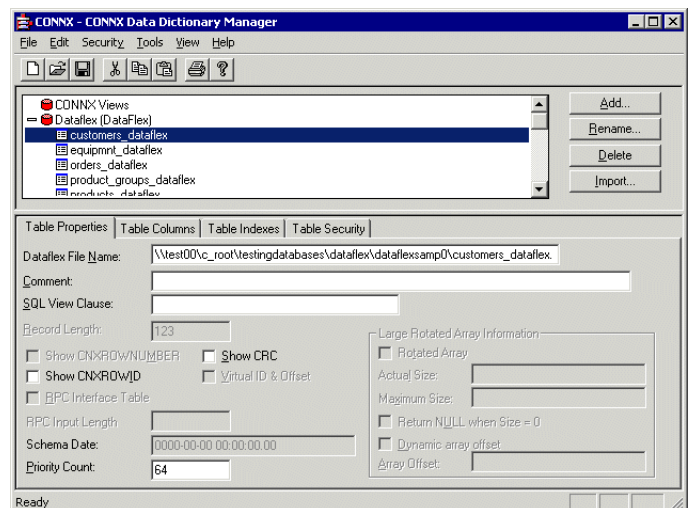


7. The **Add Tables** dialog box appears. Select the tables you want to import and then click the **Add** or **Add All** button. Click **OK**.



9. Create an ODBC data source and run some queries through a familiar reporting tool, such as Crystal Reports or the CONNX querying and reporting tool, InfoNaut. To create a data source name, refer to the CONNX Quick Reference Card "Configuring a Data Source Name for an ODBC Driver".

8. The tables are imported into the **CONNX Data Dictionary Manager** window.



CONNX Solutions, Inc  
2039 152nd Avenue NE  
Redmond, WA 98052  
425/519-6600  
fax: 425/519-6601  
toll-free: 1-888-88CONNX

www.connx.com

©CONNX Solutions, Inc., 2004. All rights reserved.

DataFlex is a trademark of Data Access Corporation in the United States and/or other countries. All other product and company names used within this document may be the trademarks or registered trademarks of their respective owners or organizations in the United States and/or other countries.