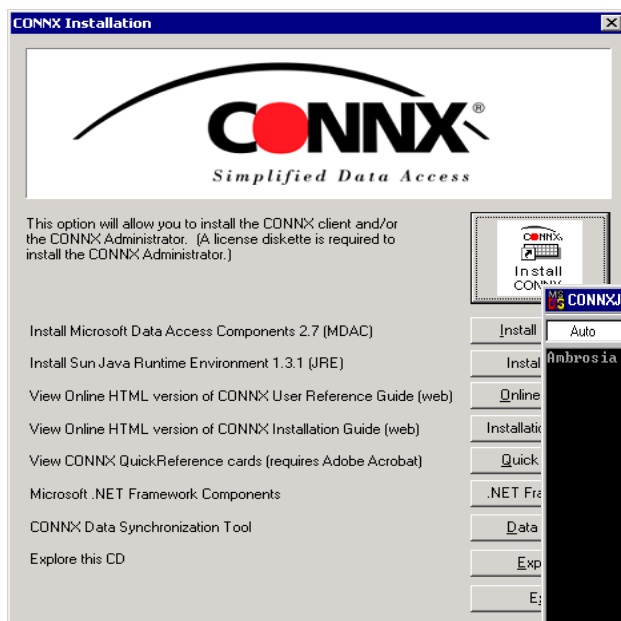


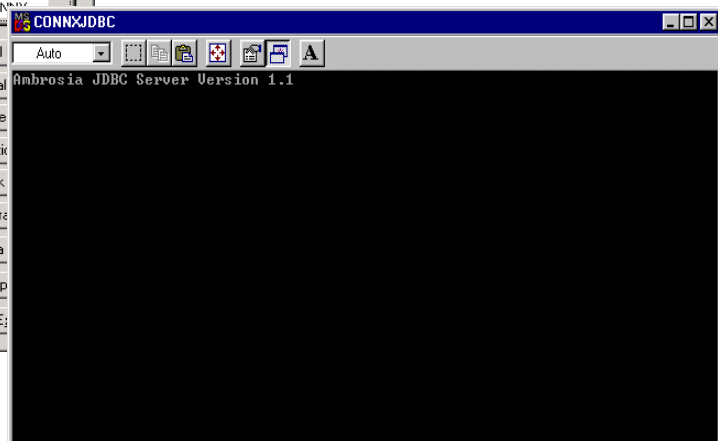
Quick-and-Easy Upgrade to CONNX 9.0

Upgrade your current CONNX version to 9.0 by
following these seven quick-and-easy steps!

1. Confirm that your system meets the system requirements for CONNX, as described in the CONNX Installation Guide, available in both .pdf and HTML format on the CONNX Website and as a Windows Help File in the CONNX Data Dictionary Manager window and on the CONNX CD-ROM.
2. Insert the CONNX license diskette into the disk drive of your computer if the license path is not available on a network location.
3. Insert the CONNX CD-ROM into the CD-ROM drive of your computer.
4. Proceed through the installation of CONNX 9.0, which includes installation of CONNX OpenVMS server, if licensed for same.



5. Install the CONNX JDBC Server and Client, if licensed for same, after verifying the existence of an appropriate JDK. Proceed through Step 3 - CONNX JDBC, in the CONNX Installation Guide.



6. Configure CONNX Administrator, your client machines, and your servers, verifying quotas and testing your connections. See Step 9 - Post-Installation Checklist in the CONNX Installation Guide for more information about configuration options, CDD conversion, and sample applications for both ODBC and JDBC drivers.

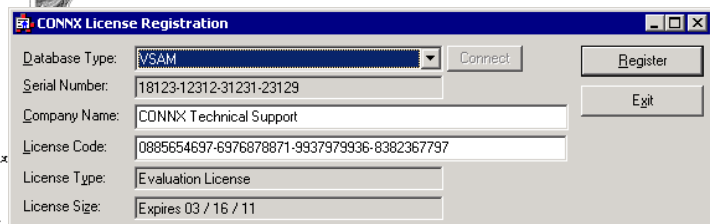
Important: The format of the CONNX Data Dictionary (CDD) changes between major version releases, so that all CDDs created in CONNX are forward-compatible. CDDs created or converted using CONNX versions 7.x or 8.x cannot be used by client machines running an earlier version (6.x, 5.x, 4.x). You must make copies of your existing CDDs prior to modification if earlier versions of CONNX are to remain in use.

7. Upgrade your license files if adding users or a new database module.



The image shows a printed license registration form for CONNX. It features the CONNX logo at the top, followed by the title "License Registration". The form contains fields for "Registered To:", "Product Licensed:", "Serial Number:", and "License Code:". Below these fields, it states "Support has been purchased for this product:" and provides "Start Date:" and "End Date:". At the bottom, there is a "Performance Tip:" and contact information for technical support and account managers.

CONNX License Registration form



The image shows a screenshot of the CONNX License Registration dialog box. It has a title bar that says "CONNX License Registration". The dialog box contains several input fields: "Database Type:" (with a dropdown menu showing "VSAM"), "Serial Number:" (with a text box containing "18123-12312-31231-23129"), "Company Name:" (with a text box containing "CONNX Technical Support"), "License Code:" (with a text box containing "0885654697-6976878871-9937979936-8382367797"), "License Type:" (with a dropdown menu showing "Evaluation License"), and "License Size:" (with a text box containing "Expires 03 / 16 / 11"). There are also "Connect", "Register", and "Exit" buttons.

CONNX License Registration dialog box

The license upgrade registration procedure is required for the following:

- When you are adding additional users to an existing CONNX installation, for example, upgrading from 25 to 50 users.
- When you are upgrading your existing CONNX installation by adding new features, for example, an RMS database.

If you are installing CONNX for the first time or your license is not changing with this CONNX installation, upgrade license registration is not required.

The upgrade license registration procedure does not use the CONNX License Diskette supplied with your original CONNX installation. Instead, you are supplied with a license update code to use with one of the programs installed with CONNX Administrator. You can request to have the license update code sent to you by fax, e-mail, letter, or you can request it by telephone.