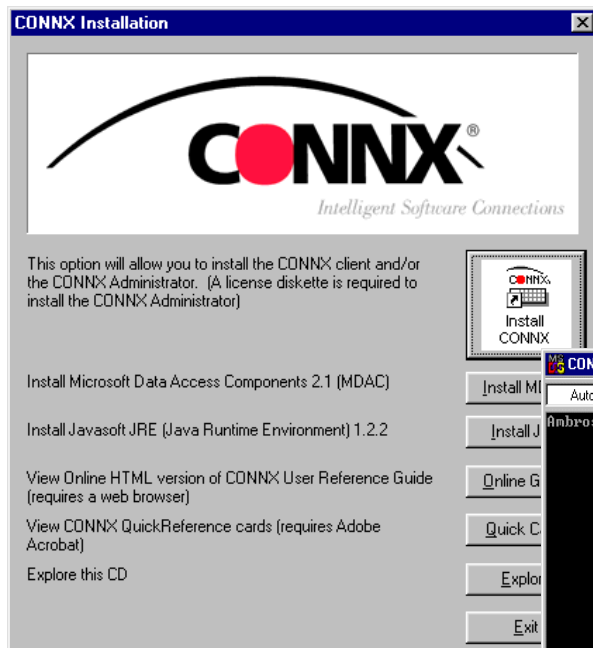


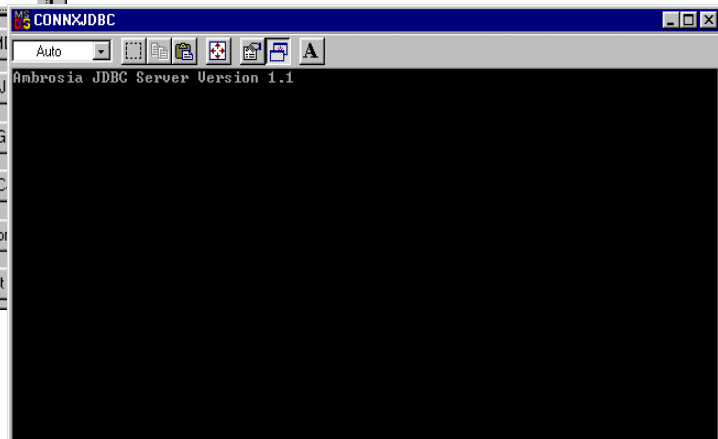
## QUICK-AND-EASY UPGRADE TO CONNX 8.8

Upgrade your current CONNX version to 8.8 by  
following these seven quick-and-easy steps!

1. Confirm that your system meets the system requirements for CONNX, as described on page 1-9 in the CONNX 8.8 Installation Guide.
2. Insert the CONNX license diskette into the disk drive of your computer if the license path is not available on a network location.
3. Insert the CONNX CD-ROM into the CD-ROM drive of your computer.
4. Proceed through the installation of CONNX 8.8, which includes installation of CONNX OpenVMS server, if licensed for same.



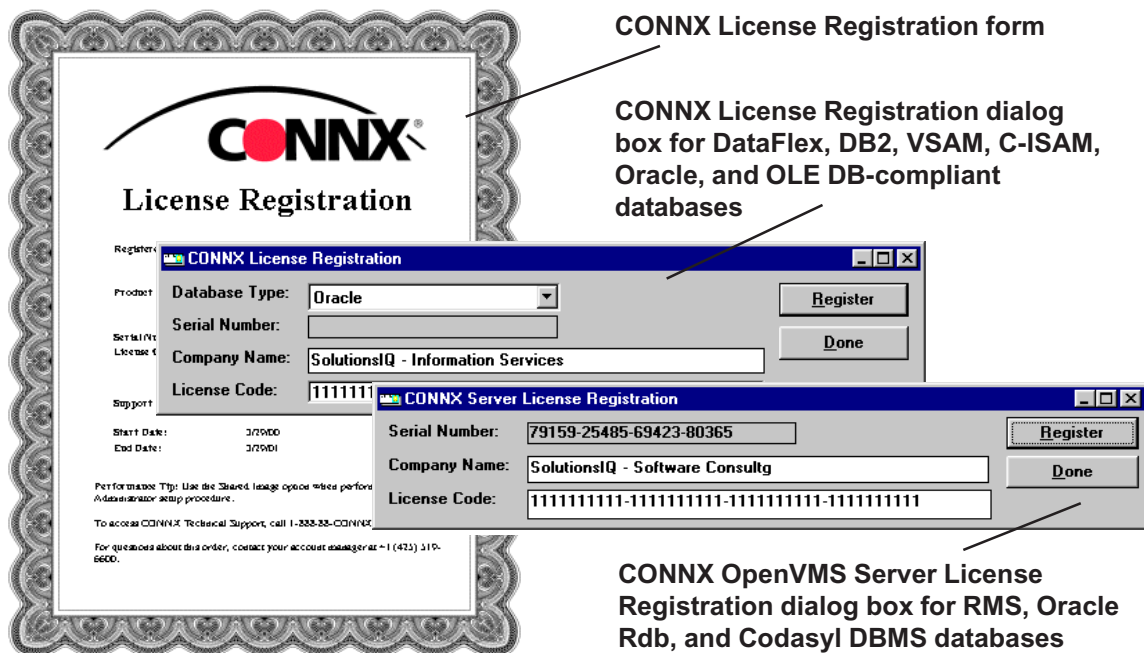
5. Install the CONNX JDBC Server and Client, if licensed for same after verifying the existence of an appropriate JDK. Proceed through Step 3 - CONNX JDBC, in the CONNX 8.8 Installation Guide.



6. Configure CONNX Administrator, your client machines, and your servers, verifying quotas and testing your connections. See Step 8 - Post-Installation Checklist in the CONNX 8.8 Installation Guide for more information about configuration options, CDD conversion, and sample applications for both ODBC and JDBC drivers.

**Important:** The format of the CONNX Data Dictionary (CDD) changes between major version releases, so that all CDDs created in CONNX are forward-compatible. CDDs created or converted using CONNX versions 7.x or 8.x cannot be used by client machines running an earlier version (6.x, 5.x, 4.x). You must make copies of your existing CDDs prior to modification if earlier versions of CONNX are to remain in use.

7. Upgrade your license files if adding users or a new database module.



The license upgrade registration procedure is required for the following:

- When you are adding additional users to an existing CONNX installation, for example, upgrading from 25 to 50 users.
- When you are upgrading your existing CONNX installation by adding new features, for example, an RMS database.

If you are installing CONNX for the first time or your license is not changing with this CONNX installation, upgrade license registration is not required.

The upgrade license registration procedure does not use the CONNX License Diskette supplied with your original CONNX installation. Instead, you are supplied with a license update code to use with one of the programs installed with CONNX Administrator. You can request to have the license update code sent to you by fax, e-mail, letter, or you can request it by telephone.